



DCO Submission

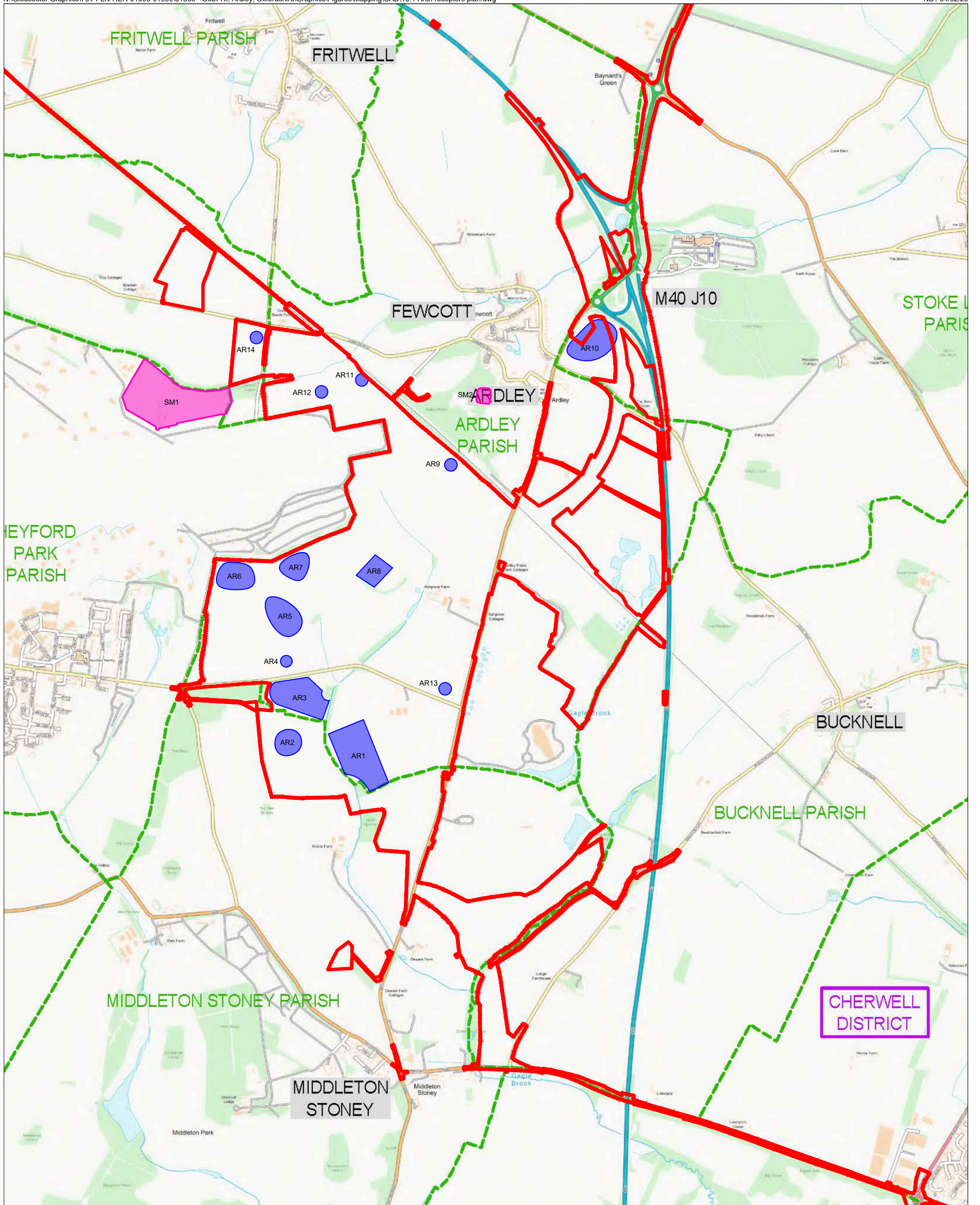
Environmental Statement

Chapter 10: Heritage (built and archaeology)
Figure 10.1: Archaeology Receptors

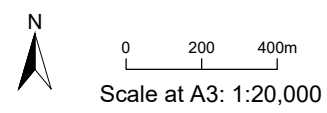
Document 6.10I

On behalf of
Oxfordshire Railfreight Limited

Prepared by RPS Group



- Site Boundary
- Archaeology Receptors
- Scheduled Monuments



OxSRFI
 OXFORDSHIRE
 STRATEGIC RAIL FREIGHT INTERCHANGE

Doc No. 6.10I
 Figure 10.1
 Reg 5(2)(m)
 Archaeology Receptors